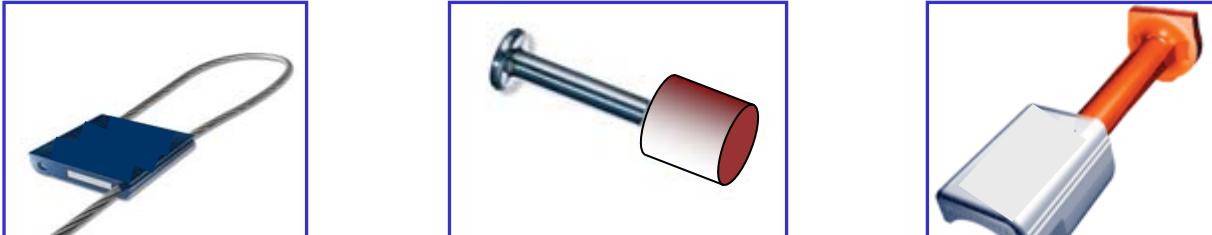


CP Approved Method: Seal Management and Recording Process

Exhibit 1: Approved USA C-TPAT & CDN PIP Seals Meet ISO/PAS 17712



The minimum seal requirement is a high security type seal meeting ISO/PAS 17712 standards, which may include a cable seal 1/8 inch in diameter, a high security bolt seal, or it's equivalent.



SEAL RECORDING PROCESS TO BE USED IN LIEU OF AFFIDAVITOR PHOTO REPORTING

Mandatory to ensure all seals are tracked to the following minimum requirements:

- Container must be sealed in compliance with ISO/PAS 17712 standards, using ISO/PAS certified seals (see Exhibit 1). It is the sole responsibility of the Shipper to apply high security sealing devices necessary to protect the cargo while in transit. CP does not apply seals or security devices (except, in the case of a "reported" seal breach of shipment integrity noted while in CP transit). CP does not inspect shipments for seal integrity nor the adequacy of seals or security devices. As a condition precedent to recovery for potential loss or damage, the Shipper is responsible for the documentation of the application of seal type and identification numbers at origin. CP will not be responsible for shortages of any kind without proof that the Shipper applied appropriate and adequate seal security devices. Proof of the type and number of seals applied at origin is necessary if the claim is for shortage.
- Shipper must record date, time, seal type and number/s equipment initials and number, employee name and signature; must have a witness and must record controlling manager for area (see Exhibit 2).
- All seals utilized by the Shipper must be sequentially numbered and recorded. Any seal that is missing from the chronology must be reported in the "number column" as missing.
- Seal recording and management program must comply to USA C-TPAT & CDN PIP processes.
- Photo evidence of seal application or affidavit may be used in lieu of a witness "Seal Log Book" recording process.

Exhibit 2: Seal Recording Process

(A)	(B)	(C)	(D)	(E)	(F)	(G)	(H)	(I)
<u>Date and Time</u> Seal Applied	<u>Seal Number</u>	<u>Container/Car</u> Number	<u>Type of</u> <u>Container/</u> Car	<u>Total</u> <u>Number</u> <u>of Seals</u> <u>Applied</u>	<u>Employee</u>	<u>Employee</u> <u>Signature after</u> <u>Seal Applied</u>	<u>Witness</u>	<u>Controlling</u> <u>Manager</u>
Sample:								
June 13, 2011 / 14:30	ABC-123456	NONU 123456	container	1	John Smith	<i>John Smith</i>	<i>Ed White</i>	Joe Black
June 15, 2011 / 09:31	ABC-123457	NONU 123457	hopper	6	John Smith	<i>John Smith</i>	<i>Ed White</i>	Joe Black
	ABC-123458							
	ABC-123459							
	ABC-123460							
	ABC-123461							
	ABC-123462							
June 17, 2011 / 11:00	ABC-123463	NONU 123458	trilevel	2	John Smith	<i>John Smith</i>	<i>Ed White</i>	Joe Black
	ABC-123464							