



## Canadian Pacific Shoreham Yard Cedar Service Site, Minneapolis, Minnesota

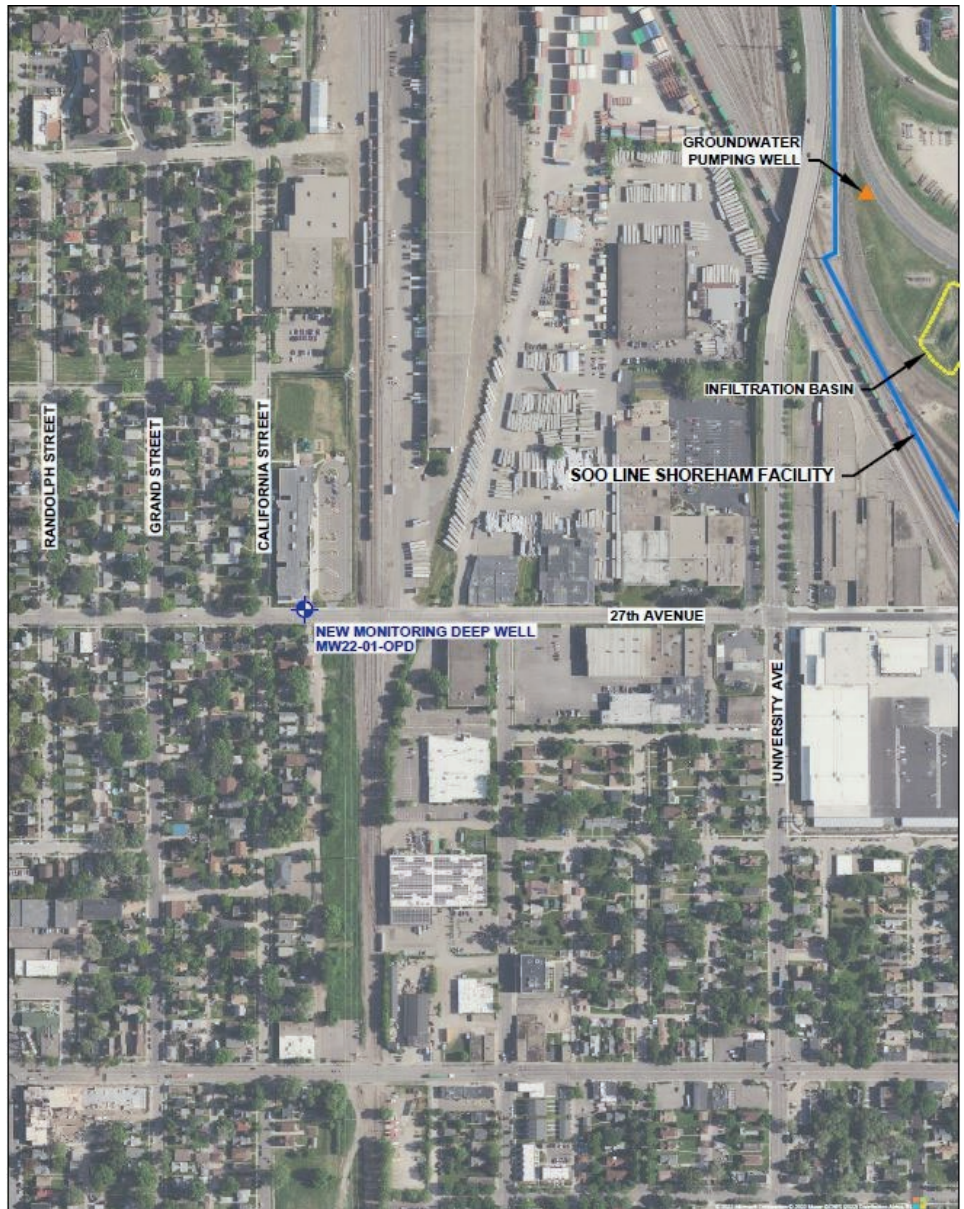
### Monitoring Well Drilling Notification April 20, 2022

This notification is being provided by Soo Line Railroad Company d/b/a Canadian Pacific (CP) about potential groundwater well drilling work anticipated to start on May 2, 2022. CP owns and operates Shoreham Yard located at 2800 Central Ave NE., Minneapolis, MN. Minnesota Department of Agriculture (MDA) has requested CP install a groundwater monitoring well along 27th Avenue just south of 2701 California Street NE, Minneapolis, MN. Please see the adjacent map for the location of the proposed well (denoted by the blue circle).

The drilling work will take place from May 2, 2022 through May 6, 2022. The work will take place between the hours of 8 am and 6 pm. The well will be drilled using fluid rotary and air rotary drilling techniques.

Well drilling staff will take appropriate safety measures including managing traffic along 27<sup>th</sup> Ave and closing the sidewalk on the north side of 27th Avenue during work hours. Pedestrians will be asked to use the sidewalk on the south side of 27<sup>th</sup> Ave during work hours .

If you have any questions about the well installation work, please contact the CP Community Contact at 800-766-7912.



## Where can I get more information?

Copies of all key reports, updates, and correspondence with regulatory authorities regarding the Soo Line Shoreham Yard Cedar Service Site are available on the following website:

<http://www.cpr.ca/en/community/shoreham-repository>

Copies of Site-related documents also may be reviewed by appointment at MDA's offices located at 625 Robert Street North in St. Paul, Minnesota, 55155-2538.

## Whom can I talk to about the site?

### **CP Community Connect: (800) 766-7912**

CP Community Connect is a toll-free service that offers a single point of contact for all stakeholders to ensure that any concerns are managed promptly and consistently.

### **Minnesota Department of Agriculture: (651) 201-6394**

Mr. Lee Zettler, Project Manager

Lee.zettler@state.mn.us

RESIDENT  
32 26th Ave NE  
Minneapolis, MN 55418

